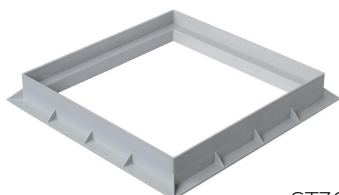
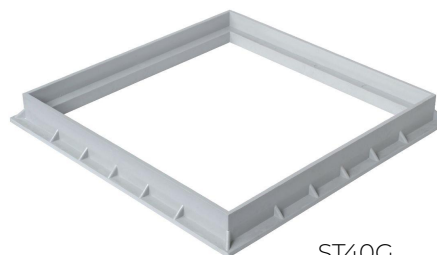


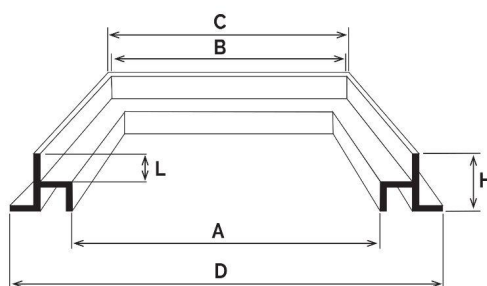
## Telai



ST30G



ST40G



Codice	A mm	B mm	C mm	D mm	L mm	H mm
<b>ST16G</b>	143	157	165	187	12	25
<b>ST20G</b>	162	189	197	218	20	40
<b>ST25G</b>	204	236	243	265	21	40
<b>ST30G</b>	253	287	293	326	22	42
<b>ST40G</b>	353	387	397	427	25	44
<b>ST45</b>	402	434	447	478	25	45
<b>ST55</b>	502	536	546	587	35	54

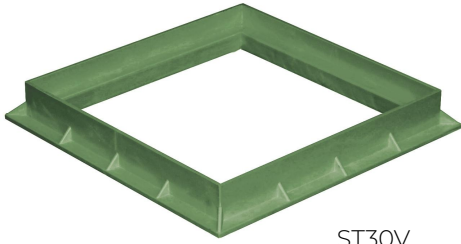
**Materiale:** PVC-U

**Colore:** Grigio chiaro

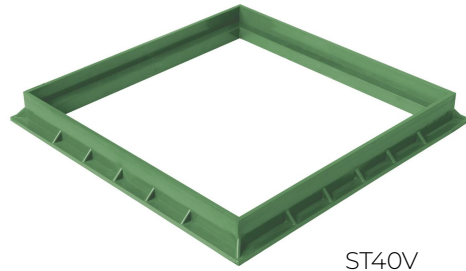
**Caratteristiche:** I telai vengono realizzati in PVC anti-shock che conferiscono al prodotto elasticità e resistenza all'urto, al gelo, agli agenti atmosferici chimici ed atmosferici.



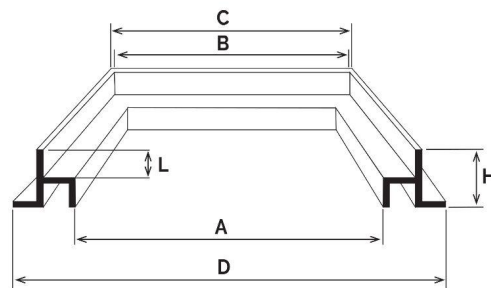
## Telai



ST30V



ST40V



Codice	A mm	B mm	C mm	D mm	L mm	H mm
ST20V	162	189	197	218	20	40
ST25V	204	236	243	265	21	40
ST30V	253	287	293	326	22	42
ST40V	353	387	397	427	25	44
ST55V	502	536	546	587	35	54

**Materiale:** PVC-U

**Colore:** Verde

**Caratteristiche:** I telai vengono realizzati in PVC anti-shock che conferiscono al prodotto elasticità e resistenza all'urto, al gelo, agli agenti atmosferici chimici ed atmosferici.

