

Roofing sheet Tegola reinforced



Available colours:



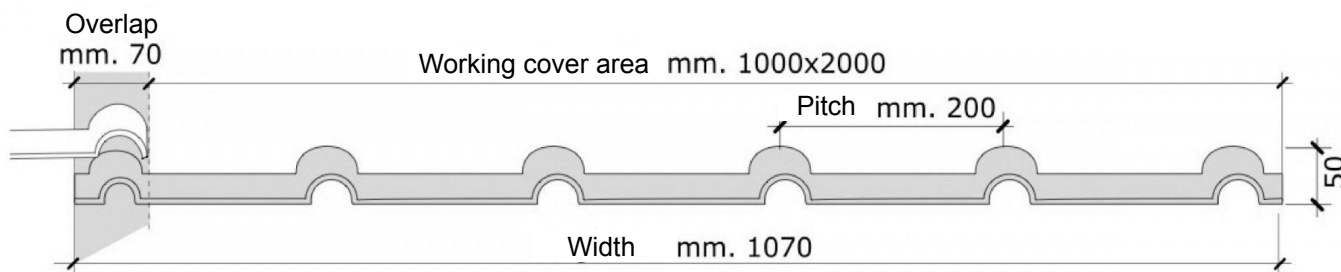
Rustic Red

Dark Brown
ref. RAL 8017Slate Blue
ref. RAL 7016

Matt Rustic Red

STANDARD LENGTHS

Item	Colour	Length m	Sheet area m ²	Weight kg
TE021TC	TC	2,08	2,23	10,26
TE021MS	MS	2,08	2,23	10,26
TE021BA	BA	2,08	2,23	10,26
TE021TOP	TOP	2,08	2,23	10,26

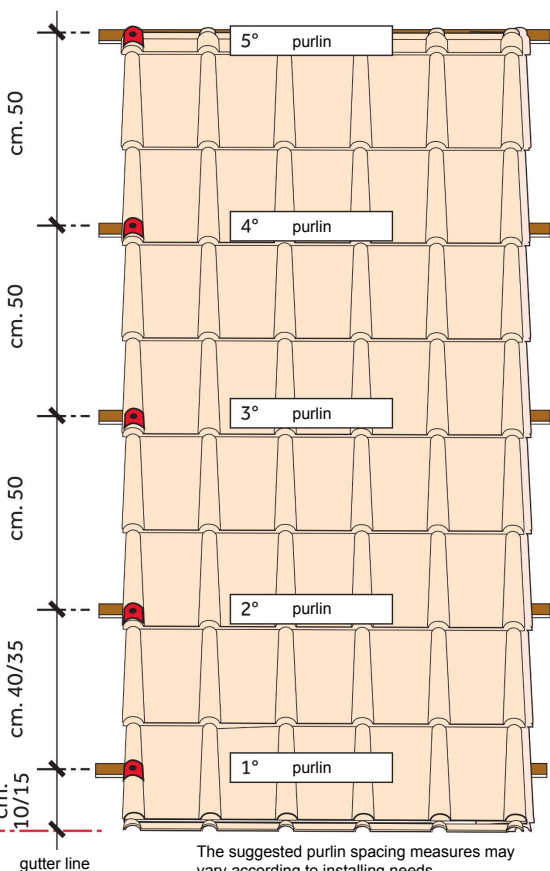


DIMENSIONAL FEATURES

Width mm	1070 ± 5
Length mm	2080 ± 5
Working cover area mm	1000x2000 ± 10
Pitch mm	200
Profile height mm	50
Thickness mm	2,5 ± 0,2
Weight kg/m ²	4,60 ± 5%
Underside colour	Beige
Maximum loading at 25°C*	kg 350

* With a distance between fixings of 495 mm.

The load is applied on the roofing sheet centre and spread out on the entire width

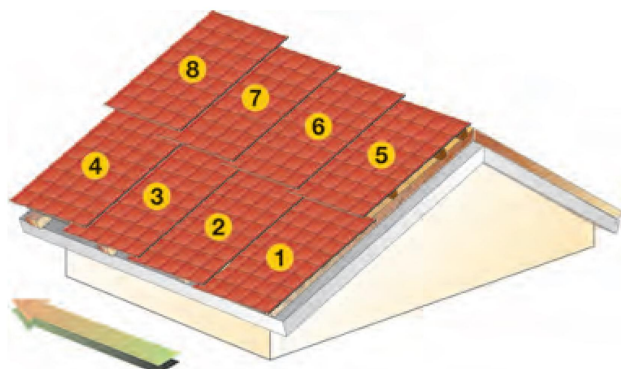


FRAMEWORK AND PURLINS

The purlin spacing for Tegola sheet must be precisely arranged according to the pitch of the sheet and the distance between the fixings. The first purlin must always be placed cm 10-15 from the edge of the sheet. The size of the overhang will be determined according to the position of the gutter anchorings. The distance between the next purlins will measure cm 50, exactly twice the pitch (cm 25), as shown in the figure.. To optimize the roofing installation, it is advisable to verify the purlin spacings before starting the sheet laying.

OVERLAP AND MINIMUM SLOPE

The longitudinal overlap of the sheets must be positioned while maintaining the aesthetic continuity of the roofing; the sheet must be placed on the lower one in correspondence with the tooth identifiable above the last row of tiles. The recommended minimum slope of Tegola sheet is 25% (14°): in case of inclination lower than 25% the longitudinal overlap of the sheets will be equal to the length of a whole pantile.



LAYING DIRECTION

SHEETS LAYING DIRECTION

To install the Tegola sheet you have to follow an obligatory laying direction from right to left and an optimum overlap designed to obtain the maximum usable roof area (see picture). The vertical overlap must be positioned preserving the aesthetic continuity of the sheets.

Laying instructions:

ADVISABLE DISTANCE	OVERLAP	MINIMUM SLOPE	LAYING SEQUENCE



Material: Technopolymer

Features: The layered polymer alloys used to make the sheet give the product resistance, lightness and elasticity, essential for roofing sheets

Use: The Tegola sheet is suitable for roofing of civil dwellings, shelters, garages, bungalows and gazebos

