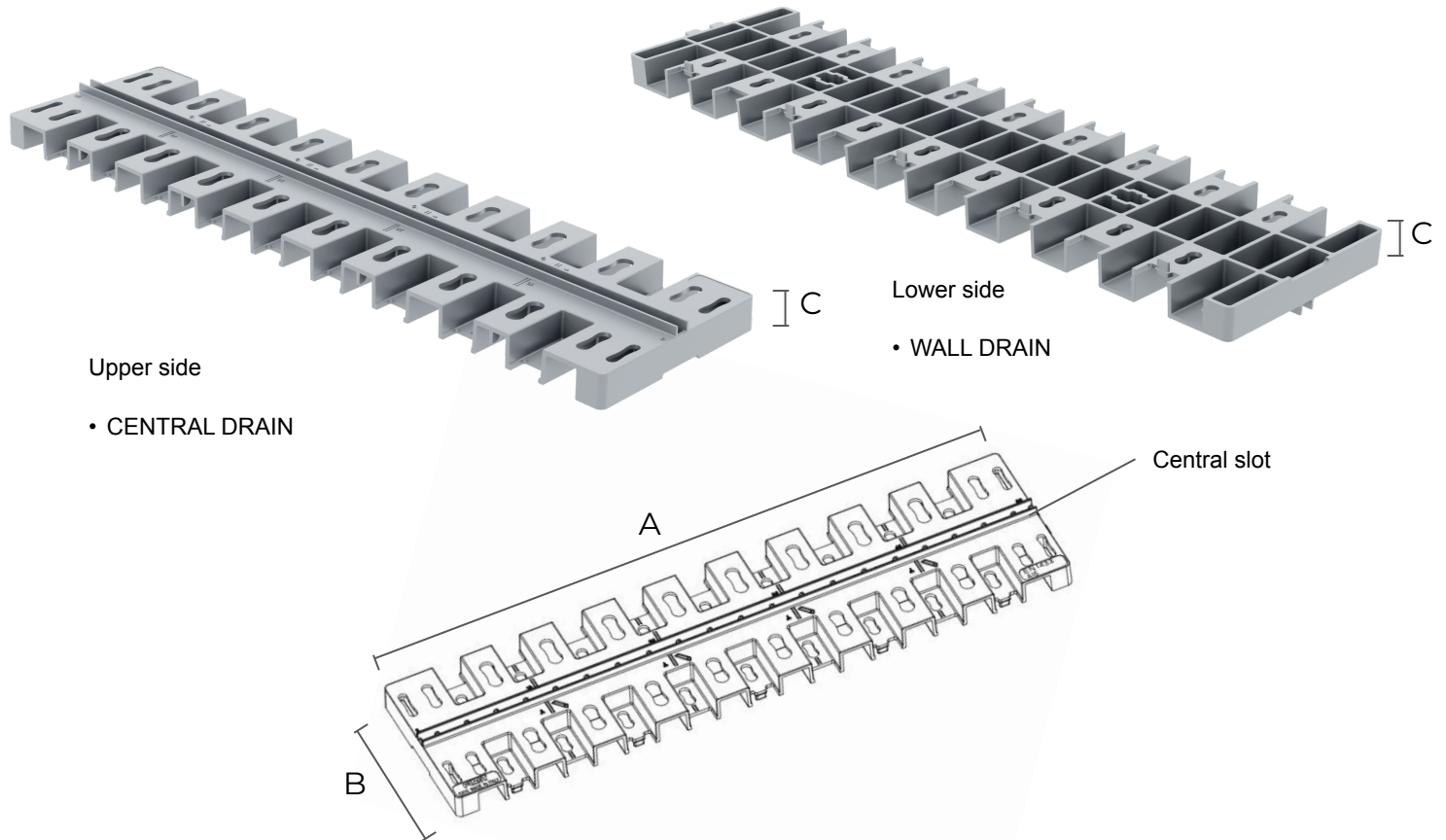


PVC SLOTTED GRID GHOST 25

2 different uses:



Code	A mm	B mm	C mm	Central slot width mm	Centre slot edge height mm	Weight g
GRF130G	500	129	20	7,4	6	434

Material: PVC-U

Colour: Grey

Features:

Non-visible walkable grid, integrated into the flooring in outdoor areas.

Its design allows up to 3 different installation options depending on requirements:

- Wall drainage: tiles are installed flush against the lateral notches;
- Central drain: tiles are installed flush against the central slot;
- Inspection pit: obtained by removing the lateral notches and cutting the tile to the same size as the grating, fastening it with two M8 screws.

The Ghost grating is compatible with Pratiko 130 modular grating channels.

- Water flow area (upper side, central slot): ~32 cm².
- Water flow area (lower side, lateral slot 9 ~39 cm².
- Single grating drainage capacity (theoretical value calculated on the assumption of a 20 mm slot):
- Central drain mode: 1.1 l/s
- Side drop mode: 1.3 l/s
- Load class A15

INSTALLATION OPTIONS

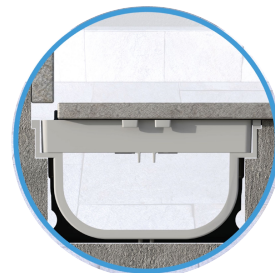
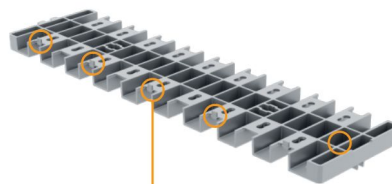
1



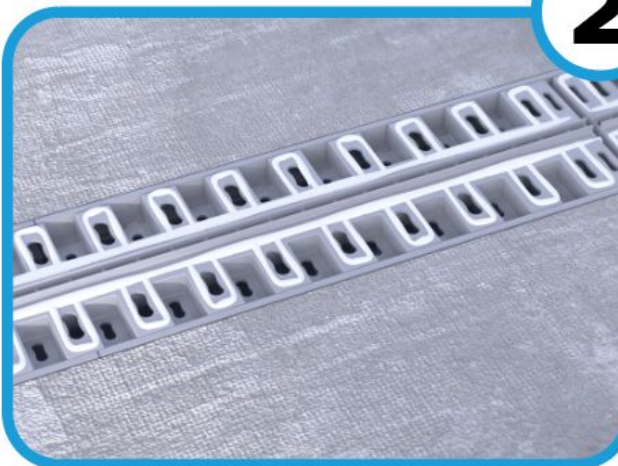
Position the grid with the pins facing upwards

Use 1 – WALL-FLUSH INSTALLATION

When the ghost 25 slotted grating is installed flush against a wall, it creates a discreet and elegant drainage line. This solution is ideal for modern outdoor spaces where visual cleanliness and a minimal aesthetics are essential. Wall-flush installation optimises rainwater collection along perimeter surfaces without interfering with the architectural design.



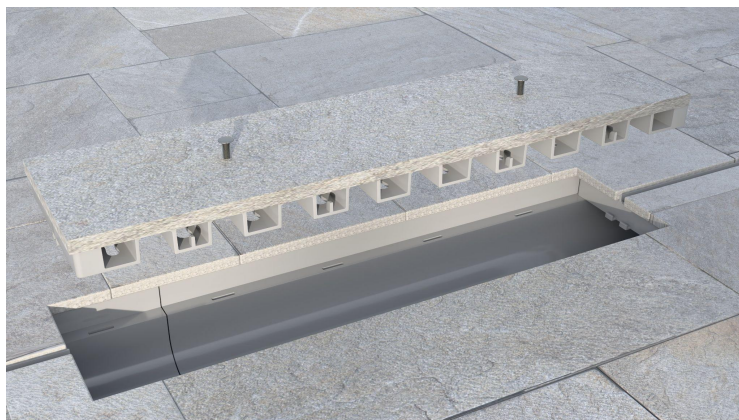
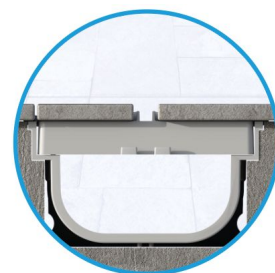
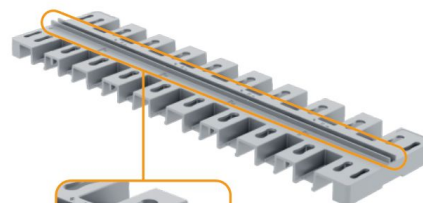
2



Position the tiles so that they adhere properly to the walls of the central slot

Use 2 - CENTRAL DRAINAGE

When the Ghost 25 slotted grating is positioned centrally, water drains away more naturally, ensuring fast and efficient drainage. This solution is suitable for courtyards, yards or paved surfaces with adequate slopes.



INSPECTION SYSTEM

In both wall-mounted or central drain installations, it is possible to integrate an inspection pit directly using the grating itself. This system allows quick access for maintenance and cleaning, guaranteeing long-term efficiency and functionality. The number and positioning of the inspection points should be adjusted according to the length and configuration of the drainage channel.

1. Remove the 5 lateral notches and the MF plug-in pins
2. Cut the tile to the external dimensions of the grating
3. Drill the tile to match the positions of the M8 nut seats
4. Insert the M8 nuts into the appropriate slots for lifting the grating/tile
5. Glue the tile, ensuring the holes align with the nuts
6. The channel can be inspected by lifting the fixed screws inserted in the nuts
7. IMPORTANT: Joints around the tile must not be filled

It is recommended to use two-component polyurethane adhesives to bond the flooring to the PVC grating.

2 / 2

